

# FRONT SKATE PARK

## Public Workshop #2

December 11, 2012

Presented by:

Kanten Russell, P.M., Skateboarder



## PUBLIC ACTION SPORT PARK DESIGN EXPERIENCE

- Over 150 public sector projects (500 sq. ft.-440 acres)
- Domestic and Internationally recognized
- Over 300 Public Consensus Workshops
- Multi-Action Sport Design Experience-Skate/ BMX/ Moto/ Water
- Planner/ Designer of Largest Public & Private Action Sport Park Projects in the World.

## PROFESSIONAL REGISTRATION/ LICENSURE

- CLARB Certification #36669

•**LANDSCAPE ARCHITECT:** AL – 579, AZ – 34186, CA – 4096, CO – 688, CT – 1122, DE – S1-0000388, GA – LS003001, IN – LA20600025, IA – 479, MD – 3319, MI – 3901001448, MN – **44397**, MO – 2005032424, MT 281, NV – 811, NM – 378, NY – 1974, OH – 501121, OK – 281, PA – LA002682, TN – 775, TX – 2319, UT – 5238119-5301, VA – 1285, WI – **508-014**, WY – LA-0085C

## LICENSED CONTRACTOR

- A-General Engineering Contractor
- C-27 Landscape Contractor

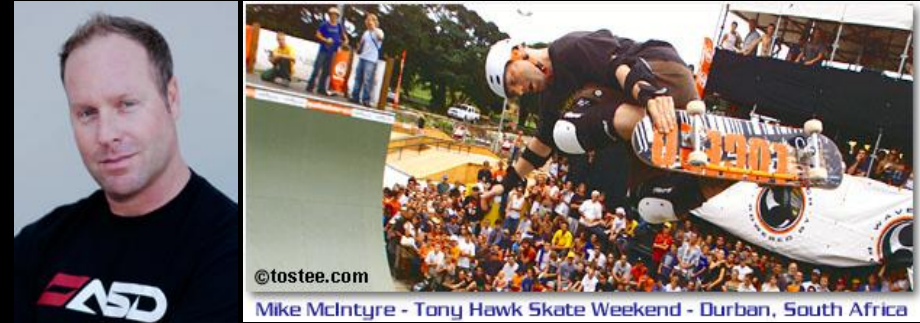
## TECHNICAL CERTIFICATION

- Certified Landscape Technician: (ALCA) Construction Irrigation, Maintenance.
- Irrigation Association-Certified Water Auditor

## EDUCATION

- California Polytechnic State University  
School of Architecture & Environmental Design  
San Luis Obispo,CA, B.S. Landscape Architecture

## Mike McIntyre, RLA #4096, ASLA, Principal



Kanten Russell, P.M./Pro Skateboarder

## PUBLIC SKATE/ BMX PARK DESIGN EXPERIENCE

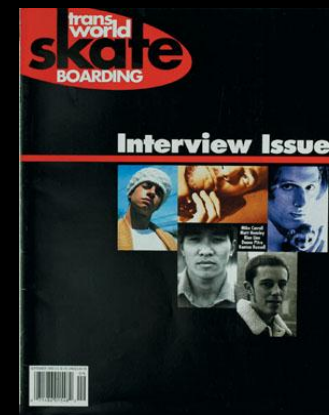
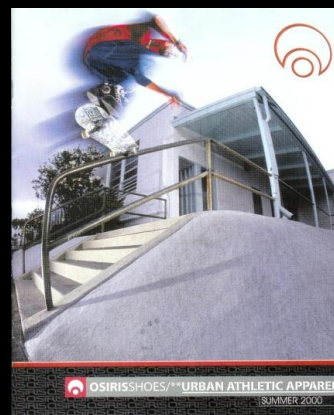
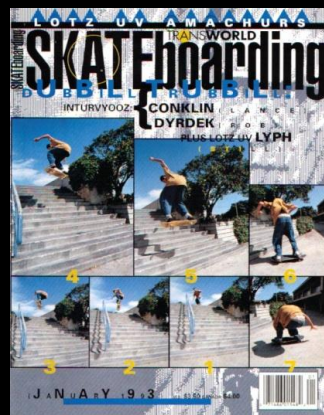
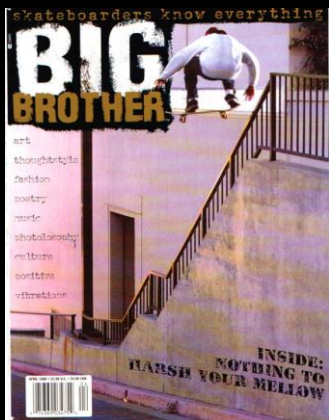
- Over 70 public sector projects (500 sq. ft.-30 acres)
- Domestic and International Experience
- Over 40 Public Consensus Workshops
- Multi-Action Sport Design Experience

## PROFESSIONAL SKATEBOARDING EXPERIENCE

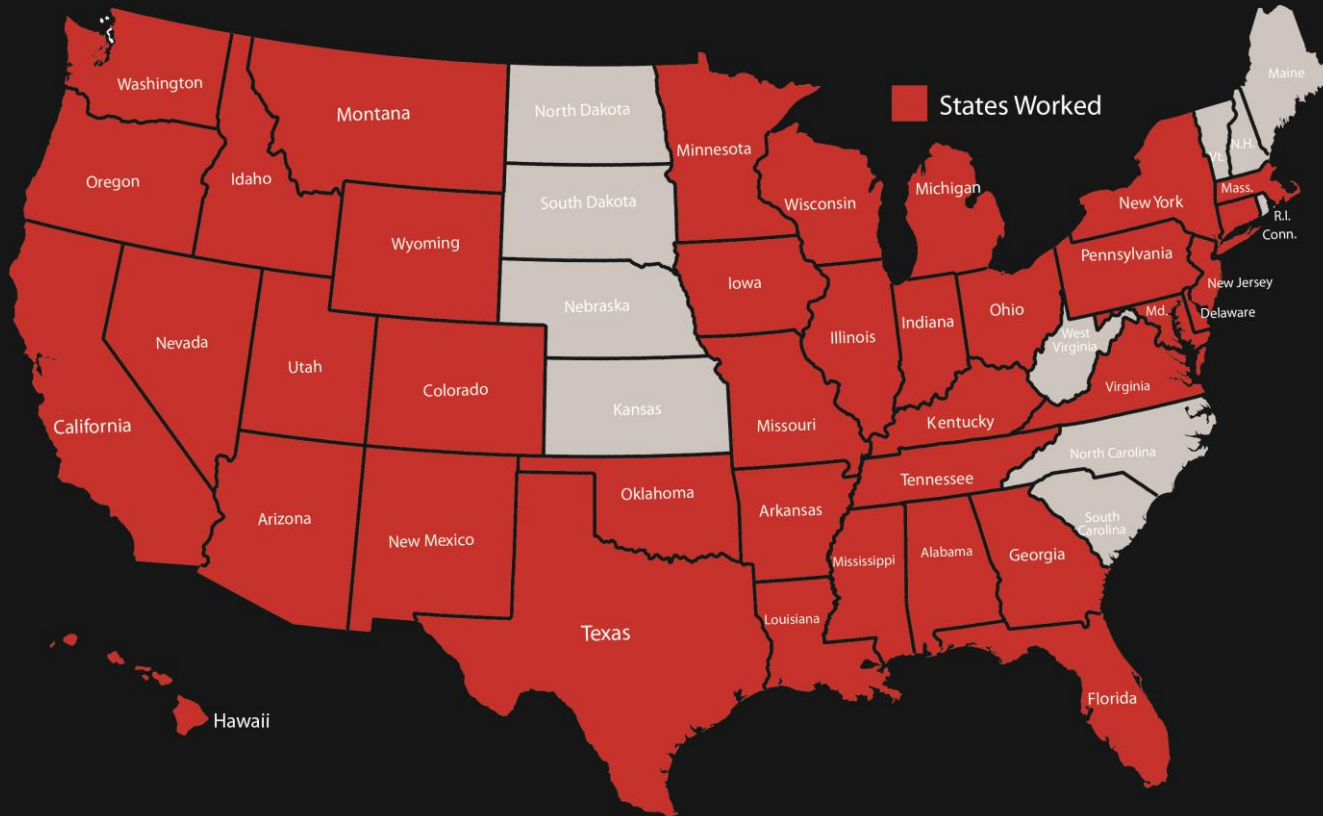
- 25 Years Skateboarding Experience
- 12 Year Professional Career
- Global Terrain Experience and Expertise

## EDUCATION

- Cuyamaca College-Dual Associates Degree
- Engineering Surveying & Cad Design







Celebrating Over 15 Years of Professional Practice

- |            |             |           |               |               |              |              |            |
|------------|-------------|-----------|---------------|---------------|--------------|--------------|------------|
| Alabama    | Connecticut | Illinois  | Maryland      | Missouri      | New Mexico   | Tennessee    | Washington |
| Arizona    | Florida     | Indiana   | Massachusetts | Montana       | New York     | Texas        | Wisconsin  |
| Arkansas   | Georgia     | Iowa      | Michigan      | Nevada        | Ohio         | Oklahoma     | Utah       |
| California | Hawaii      | Kentucky  | Minnesota     | New Hampshire | Oregon       | Pennsylvania | Vermont    |
| Colorado   | Idaho       | Louisiana | Mississippi   | New Jersey    | Pennsylvania | Virginia     | Wyoming    |



## Public Skate/ BMX Park Experience

### ARKANSAS

Tindal Park BMX- Bentonville

### ALABAMA

Alabaster-Veterans Skate Park Alabaster  
Huntsville-Insanity Skate Park Huntsville

### ARIZONA

Apache Junction Skate Park Apache Junction  
Chandler-Snedigar Complex Chandler  
Chandler-Espee BMX Park Chandler  
Coolidge-West Park Skate Park Coolidge  
Flagstaff-Bushmaster Skate Park Flagstaff  
Flagstaff-Foxglenn Skate Park Flagstaff  
Fountain Hills-Fountain Hills Skate Park Fountain Hills  
Gilbert-Freestone Skate Park Gilbert  
Glendale-X-Court Skate Park Glendale  
Goodyear-Goodyear Skate Park Goodyear  
Peoria-Rio Vista Skate Park City of Peoria  
Phoenix-Paradise Valley Phoenix  
Phoenix-Pecos Skate Park Phoenix  
Picture Rocks-BMX/Skate Plaza Picture Rocks  
Prescott-Mike Fann Skate Park Prescott  
Red Rock-Anthem Village Skate Park Tucson  
Scottsdale-McDowell Mountain Ranch Scottsdale  
Sierra Vista-Sierra Vista Skate Park Sierra Vista  
Tempe-Tempe Sports Complex Tempe  
Tempe-Victory Acres Park Tempe  
Tucson-Santa Rita Park Tucson  
Tucson-Ott Family YMCA Tucson  
Wickenburg-Wickenburg Skate Park Wickenburg

### CALIFORNIA

Berkeley-Berkeley Skate Park Berkeley  
Borrego Springs-Badlands Skate Park Borrego Springs  
Calabasas- Aquatic Center Master Plan  
Carmel Valley Skate Park San Diego  
Chino-Ayala Skate Park Chino  
Chula Vista-Salt Creek Skate Park Chula Vista  
Chula Vista-Veteran's Park Chula Vista  
Chula Vista-Santa Venetia Chula Vista

### CALIFORNIA *continued*

Clovis-Letterman Skate Park Clovis  
Coronado-Coronado Skate Park Coronado  
Culver City-Culver City Skate Park Culver City  
Delano-Delano Skate Park Delano  
Encinitas YMCA-Magdalena Ecke Encinitas  
Encinitas Hall Property Skate Plaza Encinitas  
Escondido-Escondido Sports Complex Escondido  
Fontana-Jesse Turner Skate Park Fontana  
Fort Bragg Skate Park Fort Bragg  
Fresno-Lion's Den Skate Park Fresno  
Glendale-Verdugo Skate Park Glendale  
Lake Forest-Etnies Skate Park Lake Forest  
Lathrop-Lathrop Skate Park Lathrop  
Lindo Lake Wheel Friendly Park- Lakeside- San Diego County  
Los Angeles-Nike Skate Plaza Los Angeles  
Malibu-Super Model Moto Track Malibu  
Miramar Outdoor Adventure and Extrimem Park- Marines  
Morgan Hill-Skate Park Morgan Hill  
National Level BMX- Hayward  
Ocean Beach-Robb Field-Tidelands Park Ocean Beach  
Orange Cove-Feinstein Skate Park Orange Cove  
Oxnard Skate Plaza-Campus Park  
Palm Springs-Palm Springs Skate Park Palm Springs  
Porterville-Veterans Park Porterville  
Rancho Cordova-Mather Skate Park Rancho Cordova  
San Bernardino-Blair Skate Park San Bernardino  
San Jose-mayfair San Jose  
Santa Clarita-Santa Clarita Skate Park Santa Clarita  
Selma-Berry Skate Park Selma  
Tony Hawk-Hawk Backyard Skate Park Encinitas  
Town of Apple Valley BMX Apple Valley  
Vallejo-Wardlaw Skate Park Vallejo  
Yuba City-Church of Glad Tidings Yuba City

### COLORADO

Aspen-2007 Winter X-Games-FMX Aspen  
Aurora-Aurora Wheel Park Aurora  
Boulder-Scott Carpenter Park Boulder  
Brighton-Brighton Skate Park Brighton  
Commerce City-Pioneer Skate Park Commerce City  
City of Denver- Park Field Wheel Friendly Plaza

### COLORADO *continued*

La Junta-Sk8way Skate Park La Junta  
Longmont-Sandstone Ranch Longmont  
Parker-Railbender Skate Park Parker

### CONNECTICUT

Bristol-Rockwell Skate Park Bristol

### FLORIDA

Orlando-Orlando Skate Park Orlando

### GEORGIA

Dunwoody-Brook Run Dunwoody  
Lilburn-Mountain Park Lilburn  
Stone Mountain-Deshong Stone Mountain  
Cycle Therapy- Rome

### HAWAII

Kamuela-Salvation Army Kamuela

### IDAHO

Caldwell-Pipe Dreams Caldwell

### ILLINOIS

Chicago-Wilson Skate Park Chicago  
Springfield-Springfield Skate Park Springfield

### INDIANA

Anderson-Skate Plaza Anderson

### IOWA

Davenport-Centennial Park Davenport  
Des Moines-Four Mile Park Des Moines

### KENTUCKY

Grand National BMX- La Grange

### LOUISIANA

Baton Rouge-Perkins Road X-Treme Park

### MARYLAND

Olney-Manor Skate Park Olney

## Public Skate/ BMX Park Experience

### MASSACHUSETTS

Easthampton Skate Park Easthampton  
Town of Hingham Skate Plaza Town of Hingham

### MONTANA

National Level BMX- Whitehall

### MICHIGAN

Grand Haven-Mulligan's Hollow Grand Haven

### MINNESOTA

St. Cloud Skate Plaza  
Plymouth Skate Plaza  
Eden Prairie Skate/ Bike Park  
Woodbury Skate Plaza  
Bemidji Skate Park  
Duluth-Wheeler Fieldhouse Duluth  
Rochester-Silver Lake Park Rochester

### MISSISSIPPI

Pascagoula-I.G. Levy park Pascagoula

### MISSOURI

Poplar Bluff Skate Plaza Poplar Bluff  
Hannibal-Ramp Park Hannibal  
Independence-Hill Skate Park Independence  
Kansas City-Penn Valley Skate Park Kansas City  
Springfield, MO-Skate Park Springfield

### NEVADA

Henderson-Anthem Hills Henderson  
Las Vegas-Hollywood Skate Park Las Vegas  
Southwest Regional Sports Complex

### NEW JERSEY

Princeton-Hilltop Skate Park Princeton

### NEW MEXICO

Albuquerque-Calvary Chapel Albuquerque  
Albuquerque-Los Altos Park Albuquerque  
Santa Fe-Santa Fe Skate Park Santa Fe  
Santa Fe- Downtown Skate Plaza  
Taos-Taos Skate Park Taos

### NEW YORK

New York-Chelsea Pier 62 New York  
Staten Island, NY

### OHIO

Kettering-DC Skate Plaza Kettering

### OKLAHOMA

Oklahoma-Matt Hoffman Park Oklahoma City

### OREGON

Forest Grove-Lincoln Park Forest Grove  
Hillsboro-Reedville Creek Hillsboro

### PENNSYLVANIA

York-Reid Menzer park York  
Greensburg-Peach Plaza Greensburg

### TENNESSEE

Franklin-Jim Warren Franklin

### TEXAS

Lewisville Lewisville  
Allen-The Edge Allen  
Midland-William Sam Memorial Midland  
El Paso-Carolina Skate Park El Paso  
Odesa Skate Park Feasibility Study  
Sealy Skate Park Sealy  
The Woodlands-Bear Branch The Woodlands  
Irving-Lively Point Park Irving  
Lewisville-Railroad Complex Lewisville  
Mabank-Private Residence Skate Park Mabank  
Midland-William Sam Skate Park Midland

### UTAH

American Fork-Greenwood Park American Fork  
Clearfield-Fisher Park Clearfield  
Fairmont-Fairmont Skate Park Salt Lake  
Layton City-Layton Skate Park Layton  
Logan Skate Park Logan  
Midvale-Copperview park Midvale  
Oakley-Oakley Skate Park Oakley

### UTAH *continued*

Park City-Park City Skate Park Park City  
Park City-Expansion Phase II Park City  
Salt Lake County-Kearns Park Salt Lake  
Sandy-Rosewood Skate Park Sandy

### VIRGINIA

Fairfax-Wakefield Skate Park Fairfax  
South Riding Park-South Riding South Riding

### WASHINGTON

Mukilteo-YMCA Skate Park Mukilteo  
Spokane-Albi Stadium BMX Spokane

### WISCONSIN

Kenosha-Kenosha Skate Park Kenosha  
Sauk City-Eagle Skate Park Sauk City, WI.

### INTERNATIONAL

Denmark- Copenhagen  
Middlesborough Skate Plaza- England  
Durban Wave House- South Africa  
Black Pearl Skate and Surf- Cayman Islands



---

# PROJECT HISTORY



---

# SUMMARY OF PREVIOUS EXPERIENCE

**FREE  
WEB  
MAGAZINE**

# Skatepark Insider

Spring 2011

481 In 49 States  
**The Grants Keep Flowin'**  
World's First **GREEN** Skatepark  
**3.5-million Served**

Tony Hawk strikes a South Carolinian around the extension of the Owens Field Skatepark in Columbia, South Carolina. Photo: Ben Hummel

1 PUBLISHED BY **TONY HAWK FOUNDATION**

experts per month are provided by THF staff from organizations specializing in information about skatepark development.

control THF-assisted skateparks



To-date, 1,800 communities received technical assistance and guidance from THF.



## World's First **GREEN** Skatepark

copies

been completed and opened and technical assistance.

**1/11**  
and Exposition in Atlanta, Georgia.

**\$.91**

of every dollar raised goes directly into THF programs to help build free, public skateparks in low-income communities.

**6,000**

Public Skatepark Development Guide books distributed since 2007. Printing was funded by the Tony Hawk Foundation.



Peter Whitley moved **1,200 miles** to serve as THF's Programs Director, from Tacoma, Washington to 2011.



## Minnesota Skate Plaza Sets Standards For Advocacy And Design

When 14-year-old Austin Lee first approached Mayor Dave Kleis of St. Cloud, Minnesota in 2006 to pitch the idea of a public skatepark, the Mayor was impressed by the articulate and persistent youngster. He was so impressed, in fact, that he appointed Austin to the St. Cloud Parks and Recreation Board, making him not only the youngest member ever, but the youngest to serve as Board Chair.

With the full support of his colleagues, Austin launched the St. Cloud Skate Plaza project, presented it to over 50 local businesses, and helped raise \$60,000 in the first year. Mayor Kleis promised a matching grant, and additional funds came from a number of donors, foundations, and government agencies—including \$10,000 from the Tony Hawk Foundation.

Austin Lee



Austin's effective outreach efforts even attracted the attention of the national media—in 2008 he was named the ABC World News Person Of The Week. That and other publicity helped the skatepark committee raise the \$450,000 they needed to complete the skatepark, and in November 2010 the St. Cloud Skate Plaza opened to rave reviews. But unlike most skatepark projects, this one was notable not just for who was behind it, but also for how it was designed and built.

From concept through construction, the St. Cloud Skate Plaza is the world's greenest skatepark. Among the processes and materials utilized in creating the plaza were online virtual meetings of the skatepark committee, recycled fly-ash concrete, bio swales for drainage, and locally sourced granite for ledges and fill material.

With certification pending, St. Cloud is set to become the world's first LEED-certified skatepark. But it's already passed the most important test—hundreds of skaters from throughout the region visit the park each day.

The St. Cloud Skate Plaza has set the standard for how a forward-thinking community can harness the energy and passion of its youth to achieve not just a new skatepark, but a new understanding of what its future leaders are truly capable of.

# PROJECT EXPERIENCE

*ST. CLOUD, MN SKATE PLAZA*

Skate Park Size: 25,000 sq. ft.





# PROJECT EXPERIENCE

## ST. CLOUD, MN SKATE PLAZA

Skate Park Size: 25,000 sq. ft.



# PROJECT EXPERIENCE

## ST. CLOUD, MN SKATE PLAZA

Skate Park Size: 25,000 sq. ft.



# PROJECT EXPERIENCE

## ST. CLOUD, MN SKATE PLAZA

Skate Park Size: 25,000 sq. ft.





## CARLSBAD, CA-SKATE PARK

Skate Park Size: 22,500 sq. ft.

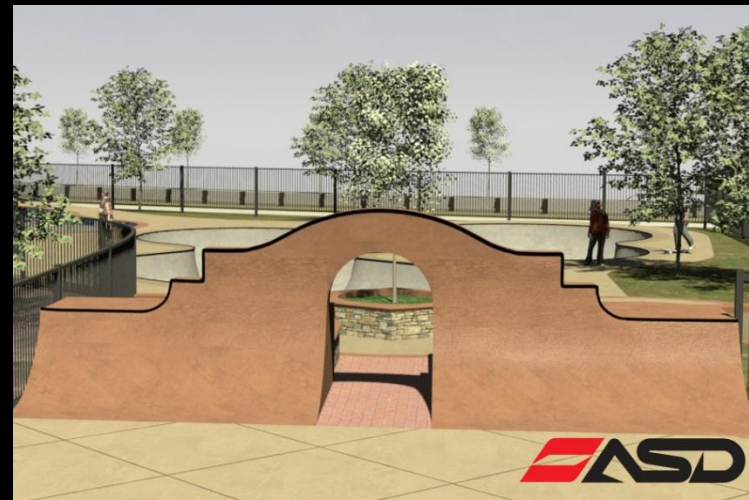




# PROJECT PORTFOLIO SAMPLES

## CARLSBAD, CA-SKATE PARK

Skate Park Size: 22,500 sq. ft.













# PROJECT EXPERIENCE









# PROJECT EXPERIENCE

*CITY OF POPLAR BLUFF, MO-Skate Park*

Skate Park Size: 22,500 sq. ft.



# PROJECT EXPERIENCE

***CITY OF POPLAR BLUFF, MO-Skate Park***

Skate Park Size: 22,500 sq. ft.





## *CITY OF POPLAR BLUFF, MO-Skate Park*

Skate Park Size: 22,500 sq. ft.





## LIVE OAK, TX FITNESS PARK



## LIVE OAK, TX FITNESS PARK





## Lake Geneva, WI Skate Plaza





# PROJECT PORTFOLIO SAMPLES

*CINCINNATI, OH*

*36,000 SQ. FT.*

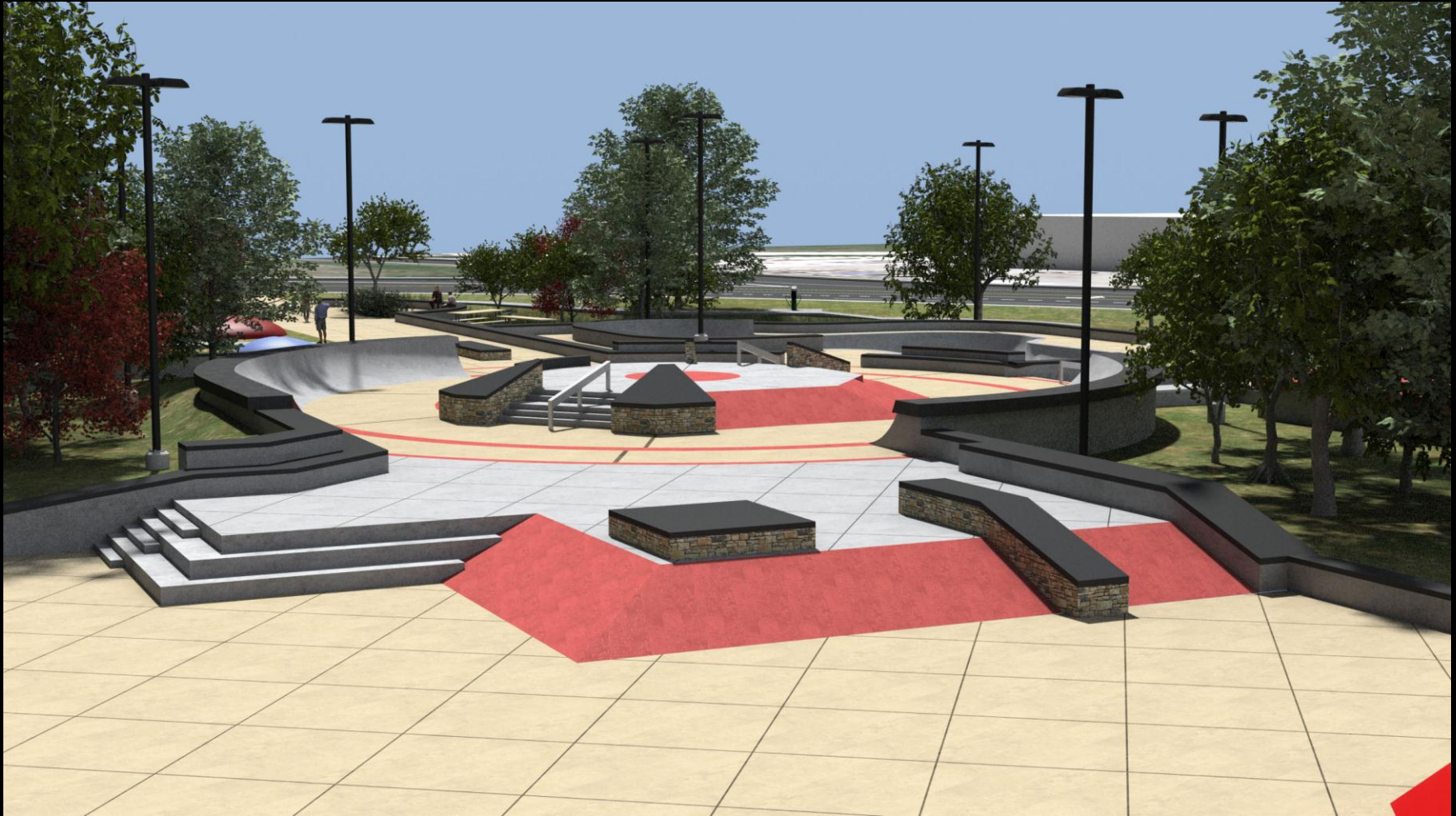




# PROJECT PORTFOLIO SAMPLES

*CINCINNATI, OH*

*36,000 SQ. FT.*





# PROJECT PORTFOLIO SAMPLES

***CITY OF DENVER, CO-WHEEL FRIENDLY PARK***

Wheel Park Size: 13,500 sq. ft.



# PROJECT LOCATION

**CITY OF DENVER, CO-WHEEL FRIENDLY PARK**

Wheel Park Size: 13,500 sq. ft.





# PROJECT PORTFOLIO SAMPLES

**CITY OF DENVER, CO-**

Skate Park Size: 13,500 sq. ft.



# PROJECT PORTFOLIO SAMPLES

*CITY OF Plymouth, MN-Wheel Park*

Wheel Park Size: 10,000 sq. ft.

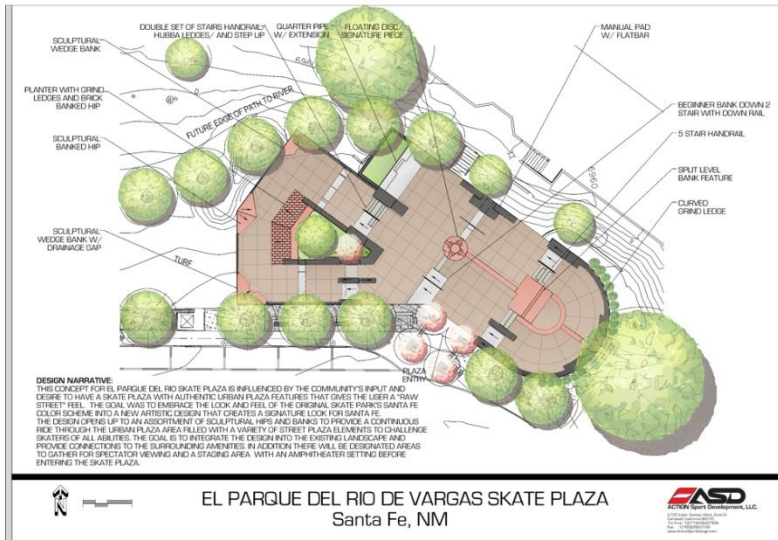




# PROJECT PORTFOLIO SAMPLES

## City of Santa Fe, NM

Wheel Park Size: 6,000 sq. ft.



# PROJECT PORTFOLIO SAMPLES

**FABER PARK-STATEN ISLAND, NY SKATE PLAZA**

Wheel Park Size: 10,000 sq. ft.





**CHARLES RIVER SKATEPARK, CAMBRIDGE, MA**





# CHARLES RIVER SKATEPARK, CAMBRIDGE, MA



CONCEPT B





---

# PROJECT UNDERSTANDING

# PROJECT LOCATION





# SITE ANALYSIS



AVAILABLE SPACE TO EXPAND SKATE PARK



FUTURE SKATEPARK LOCATION (FROM MACKUBIN)



FUTURE SKATEPARK LOCATION (FROM STINSON)



EXISTING RESTROOM BUILDING



APARTMENT BUILDING



SHADE SPACE NEAR EXISTING SKATE PARK



EXISTING SKATE PARK CONCRETE IS IN GOOD SHAPE



DEGRADING SKATEING ELEMENTS



STREET VIEW FROM SOUTH OF STINSON

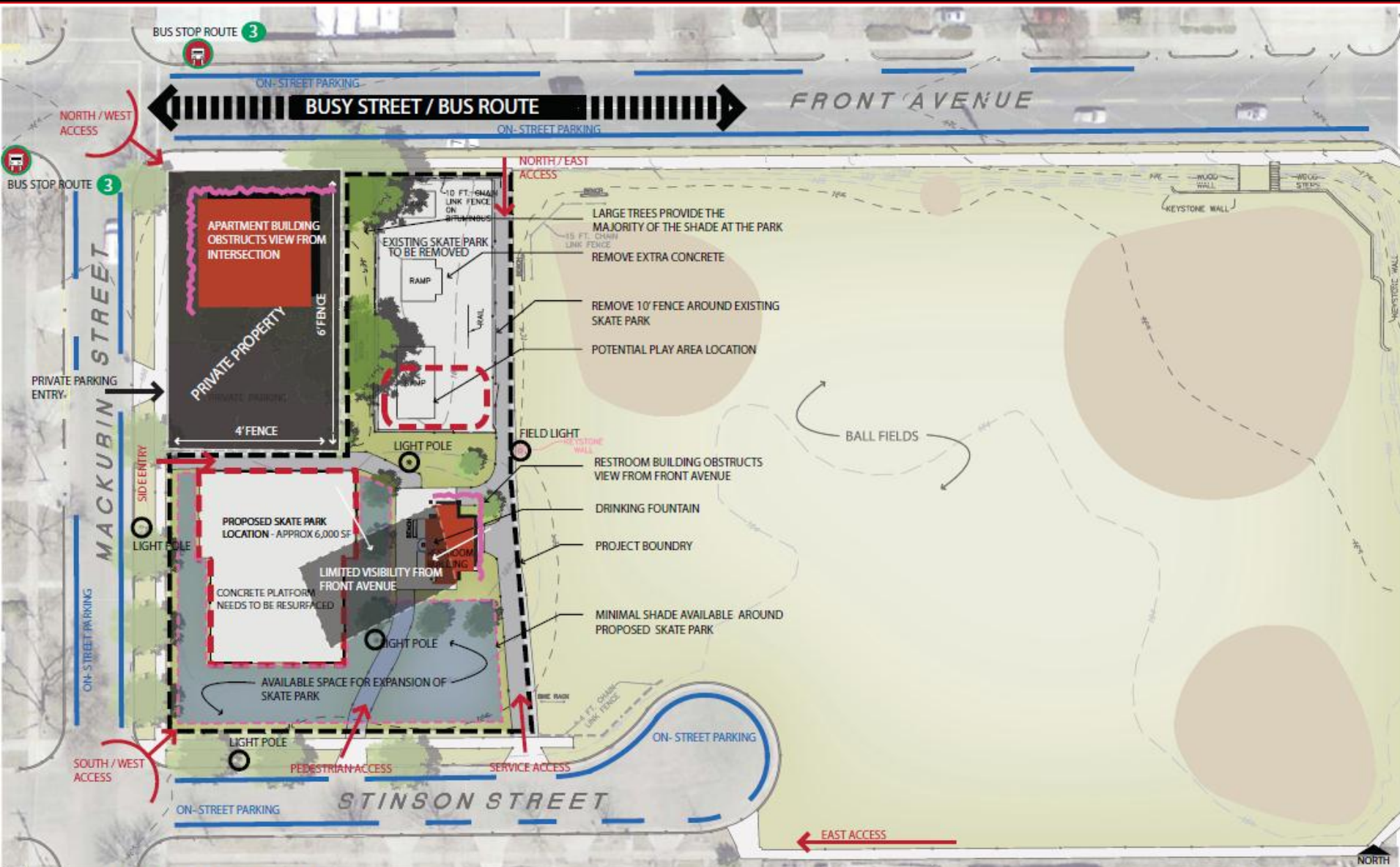


# EXISTING CONDITIONS





# SITE ANALYSIS



## 8. What type of skating elements would you add to the current skate park? Please rank.

	Really want to add	Nice to have but could live without	Don't really need	Rating Average	Response Count
Mini ramps	63.7% (79)	24.2% (30)	12.1% (15)	1.48	124
Flat rail	63.5% (80)	31.0% (39)	5.6% (7)	1.42	128
Bowl	52.5% (64)	27.0% (33)	20.5% (25)	1.68	122
Hand Rail	54.5% (66)	27.3% (33)	18.2% (22)	1.84	121
Launches	32.3% (40)	37.1% (46)	30.6% (38)	1.98	124
Wall ride/ Vert wall	47.0% (55)	29.1% (34)	23.9% (28)	1.77	117
Stairs	57.3% (71)	22.6% (28)	20.2% (25)	1.63	124
Roll-ins	40.0% (48)	31.7% (38)	28.3% (34)	1.88	120
Fun Boxes	73.2% (93)	21.3% (27)	5.5% (7)	1.32	127
			Other (please specify)		62
			answered question		135
			skipped question		16

## 9. What would you like to see in addition to new skating obstacles?

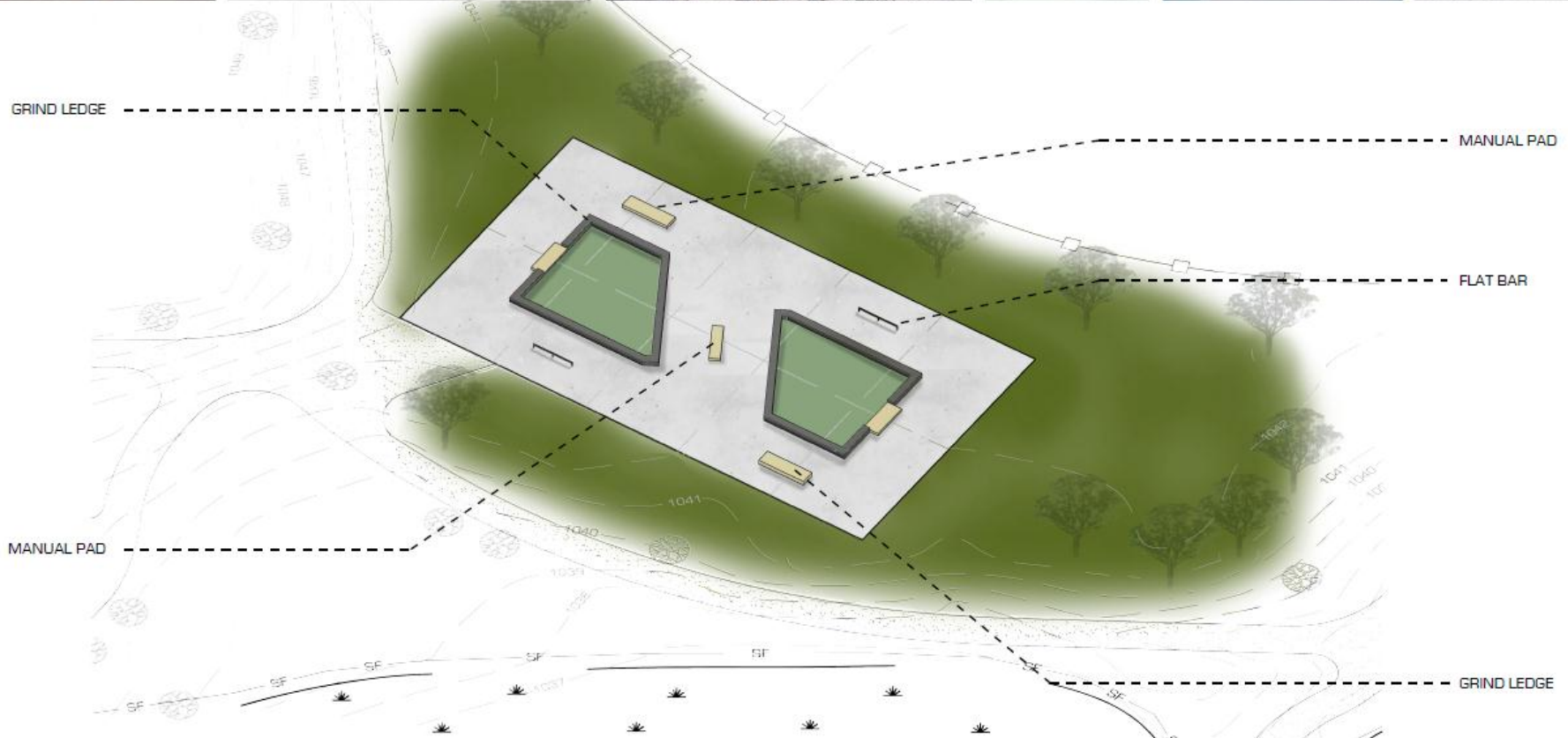
	Response Percent	Response Count
Gathering Space	50.4%	63
Additional Seating	32.0%	40
Additional Shade	75.2%	94
	Other (please specify)	39
	answered question	125
	skipped question	26

## Page 1, Q4. Do you visit any other skate parks within the City of Saint Paul or Minneapolis?

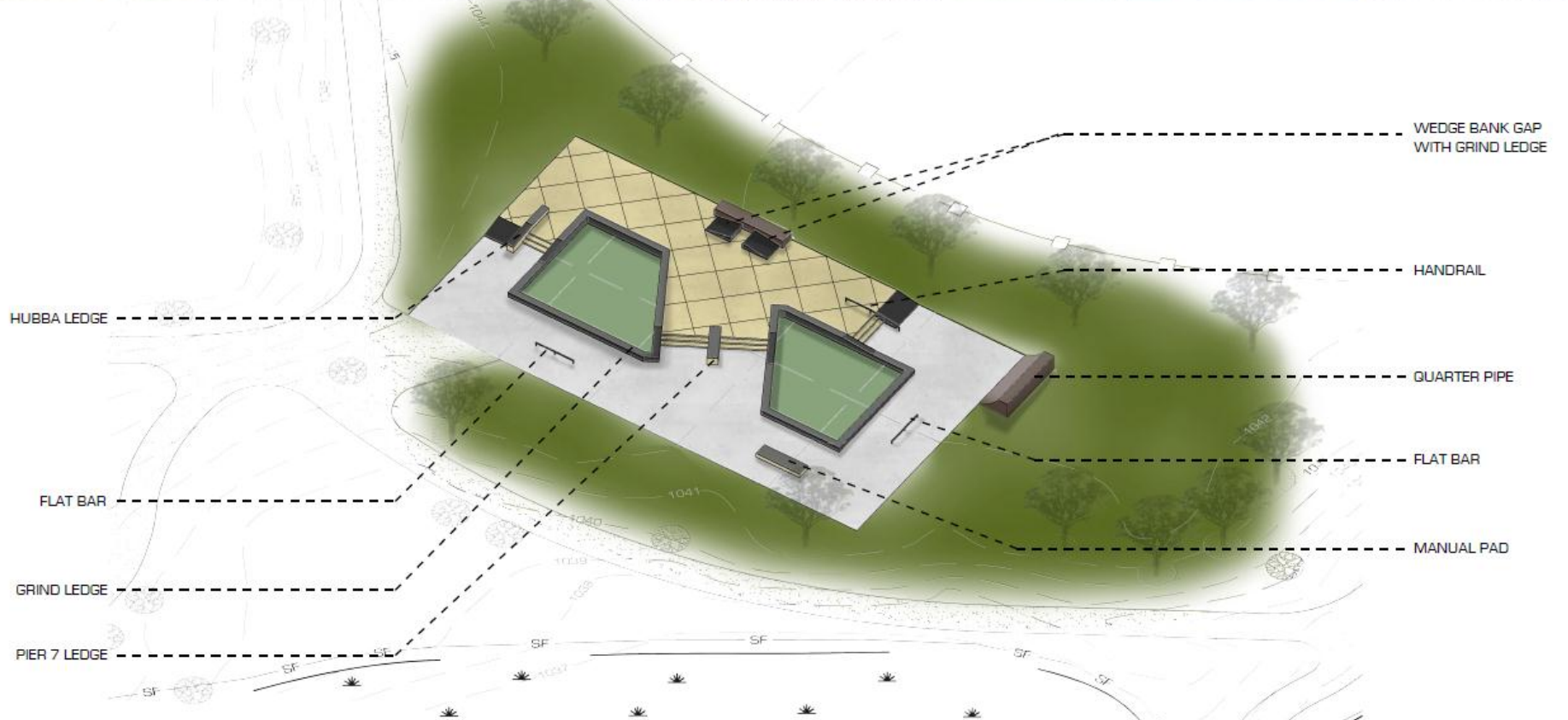
1	Marium and the Roseville oval, they have a lot of space and nice vert and rails	Oct 24, 2012 2:41 PM
2	walton skate park , open space and more tech stuff	Oct 19, 2012 11:27 AM
3	Bottineau, Elliott, Front, Brackett, Merriam, Morris—it's important for parks to have a selection of vert ramps and they should have a mini-ramp/half-pipe	Oct 16, 2012 7:31 PM
4	Oakdale Skatepark, Crystal Skatepark, Hugo Skatepark, Little Canada Skatepark, 3rd Lair Skatepark, Summit Boardshop's Skatepark	Aug 15, 2012 12:24 AM
5	Merriam Skatepark, Roseville Oval Skatepark, Little Canada Skatepark	Aug 14, 2012 10:25 PM
6	Oval, wide variety of obstacles	Aug 14, 2012 9:57 PM
7	Bottineau, Roseville Oval, Shoreview. The best thing to skate at these parks is stair sets, handrails, and ledges.	Aug 14, 2012 5:14 PM
8	3rd Lair, which is in Golden Valley. It's clean and has nice obstacles to skate: ramps, ledges, rails, etc.	Aug 14, 2012 5:08 PM
9	Oakdale	Aug 4, 2012 10:40 AM
10	Elliot Park	Aug 4, 2012 12:24 AM
11	smooth ground and transition	Aug 3, 2012 8:25 PM
12	Merriam	Aug 3, 2012 8:13 PM
13	More serious obstacles more vert,	Aug 3, 2012 7:40 PM
14	ALL	Aug 3, 2012 4:02 PM
15	all of them, when i am in the area mite as well hit them all!	Aug 3, 2012 3:41 PM
16	bottineau. it has transition. ie. quarterpipes, spines, ramps, and its concrete	Aug 3, 2012 2:06 PM
17	Mendota Heights - For the mini-ramp. Oakdale - Concrete!	Aug 3, 2012 1:26 PM
18	Merriam Skate park	Aug 3, 2012 1:23 PM
19	Armatage, Morris Park, Bottineau, Elliot Park. The flat bars at the Armatage and Elliot Park skate parks are very fun. I usually spend most of my time skating those. I like the fact they are all the cement style ramps too. They hold up better against the extreme cold temps in the winter. I like the Bottineau park in North East Minneapolis because it has fun quarter pipe ramps. The center piece has the fun hip style quater pipe and the spine ramp in between the two quater pipes is super fun as well. I go there primarily to just skate the transition. However, the flat bar there is WAY too close to the fence. That park is very claustrophobic feeling, everything is very close to each other. The thing about Morris Park skate park that I like is the fact there is different style obstacles to skate. The bench and the large ledge style obstacle with the flat bar coming off of it is super fun to skate. It provides many different ways of approaching the way you can skate it. The bench is really fun as well because it is a super basic obstacle that is a common thing to find if you were to go street skating. It's fun to learn a trick on	Aug 3, 2012 1:17 PM



# EXAMPLE CONCEPTS



# EXAMPLE CONCEPTS





# EXAMPLE CONCEPTS











---

# FRONT SKATE PARK MEETING #1 SUMMARY



**ST. PAUL, MN  
FRONT SKATE PARK  
WORKSHOP #1 SUMMARY**

**THE PROCESS**

On November 14th, 2012 members of the St. Paul community were invited to attend a design workshop to discuss the Sports Parks Expansion and the new skate park. Approximately fifty (20) attendees participated in the evening's workshop discussions.

During the workshop, participants were asked to complete a questionnaire soliciting their input on the new skate park in Santa Clarita. There were 20 workshop participants and 17 completed the questionnaire.

The questionnaire that was presented listed all the skate park elements/amenities that could be included in the new skate park. Each individual then identified the skate park elements/amenities desired on the questionnaires. Then, the attendees were broken into 2 different groups. The groups discussed individual design ideas until a group consensus on the design was reached and recorded on large format paper with scaled feature cutouts and sketches. The group's conclusions were presented to all workshop participants in the front of the room and documented.

**OVERVIEW OF RESULTS**

***WHO ARE THE WORKSHOP PARTICIPANTS?***

The workshop participants are a group of intermediate and experienced skateboarders. Most of the attendees have been skating for over 3 years. Most participants consider themselves to be an intermediate to advanced skill level.

***WHAT IS THEIR SKATE PARK EXPERIENCE?***

Almost all of the attendees have skated at a public skate park.

***WHERE DO YOU CURRENTLY SKATE/BIKE?***

Most of the workshop participants go to the local Minnesota skate parks and streets of St. Paul, MN

***WHAT SKATE PARK FEATURES ARE YOU INTERESTED IN?***

The workshop participants are interested in the following features at a skate park: bank, rails, ledges, stairs, hips, flow and lights. Unique features

***WHAT SKATE PARK FEATURES ARE YOU NOT INTERESTED IN?***

The workshop participants were not interested in the following features at a skate park: bowls with a lot of vert. Not too much landscaping. No Fencing

*WHEN AND HOW OFTEN DO YOU SKATE/BIKE?* During the summer is when most skating occurs, however during the non summer months the attendees skate/bike after school or after work. Most skate for a few hours – usually between the hours of 3 pm and 10 pm after school hours. The workshop participants usually skate an average of 2-3 times a week, although some skate everyday.

What are the **Top 3 Skate Park Elements/Amenities Needed** at the Front Skate Park?

GROUP 1	GROUP 2
Plaza features	Good Flow
Good Flow	Plaza features
Half Pipe Flow	Varying stair sets

<b>TOP ELEMENTS/AMENITIES NEEDED</b>
Plaza/Street Area
Good Flow
Lots of space
Half Pipe
Stairs
Ledges
lighting
Seating/ Shade



---

**FRONT SKATE PARK  
MEETING #1 WORKSHOP PHOTOS**



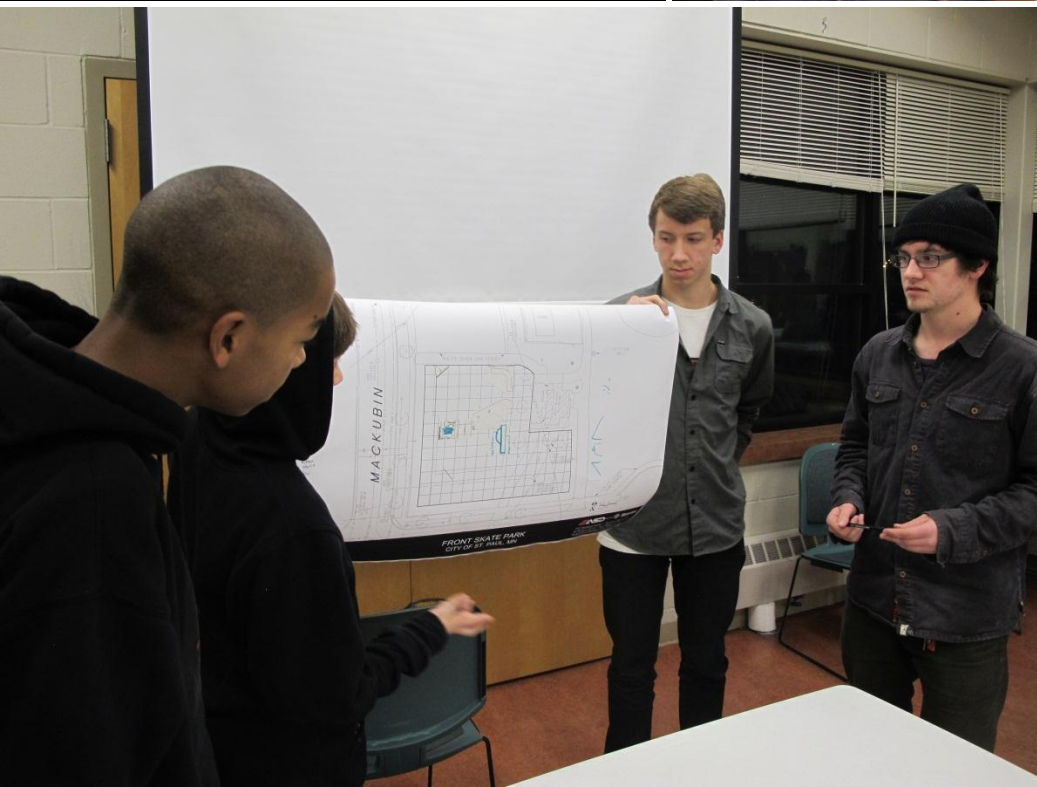
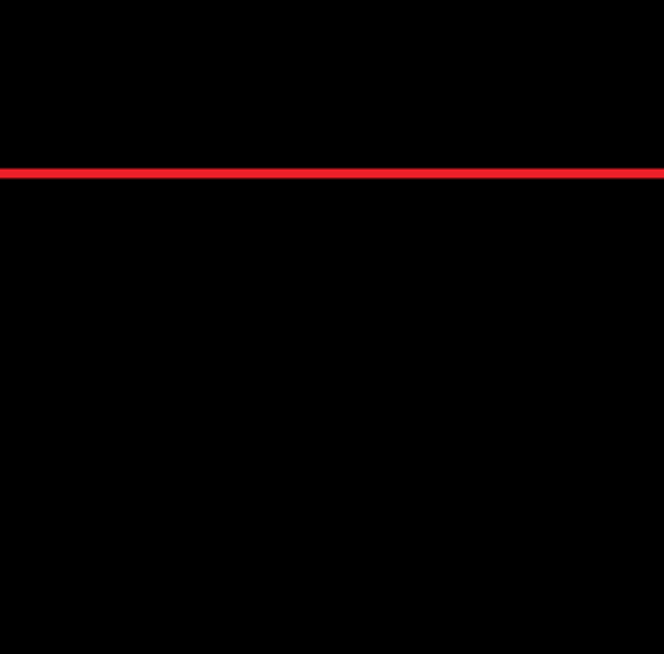
FRONT SQUARE PARK  
CITY OF ST. PAUL, MN

**ASD** CONSTRUCTION  
141 Portland Street | Boston  
9719 Ames Drive | San Jose  
info@asdcorp.com | 617-552-1100







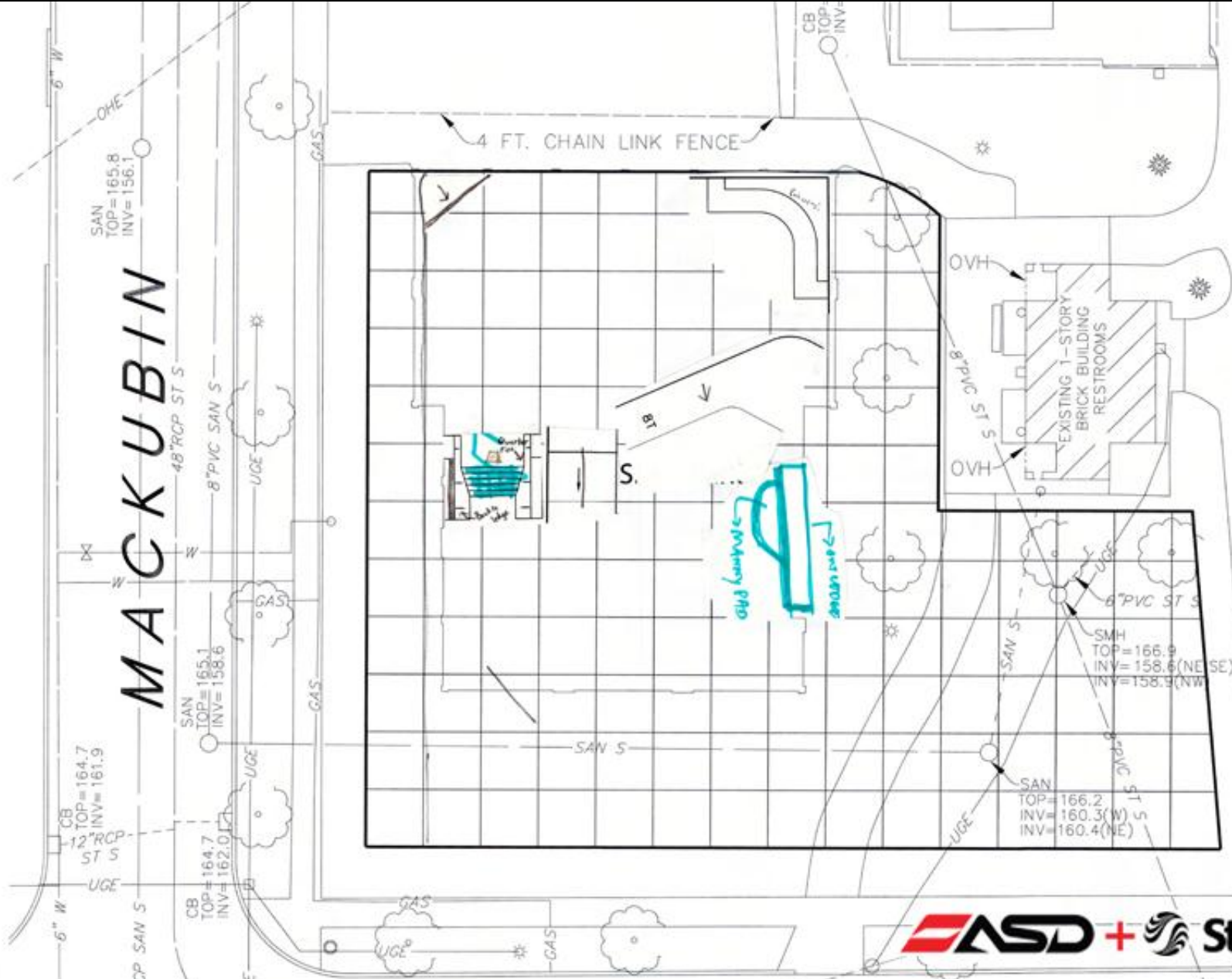




---

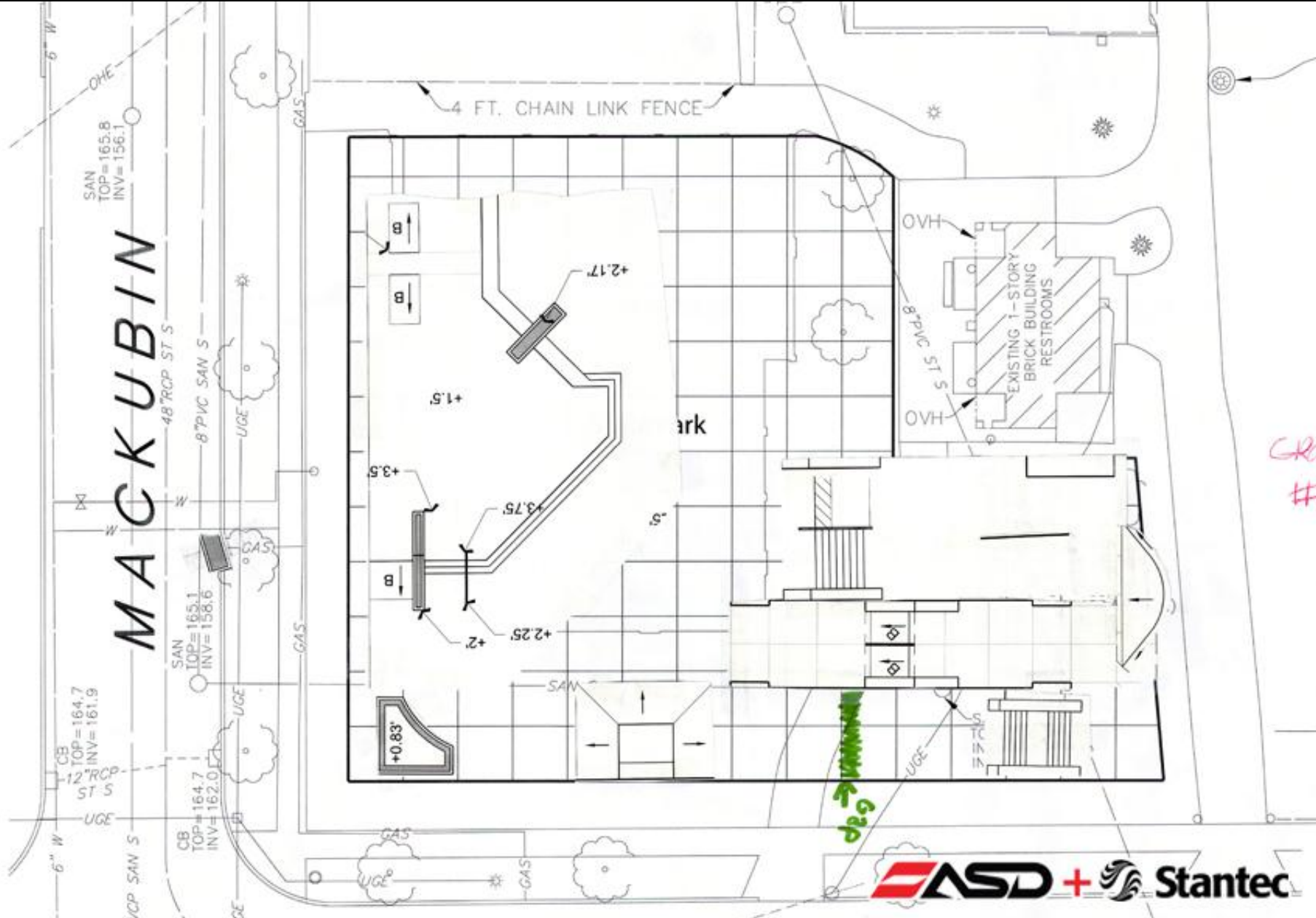
# FRONT SKATE PARK MEETING #1 WORKSHOP CONCEPTS

# GROUP #1

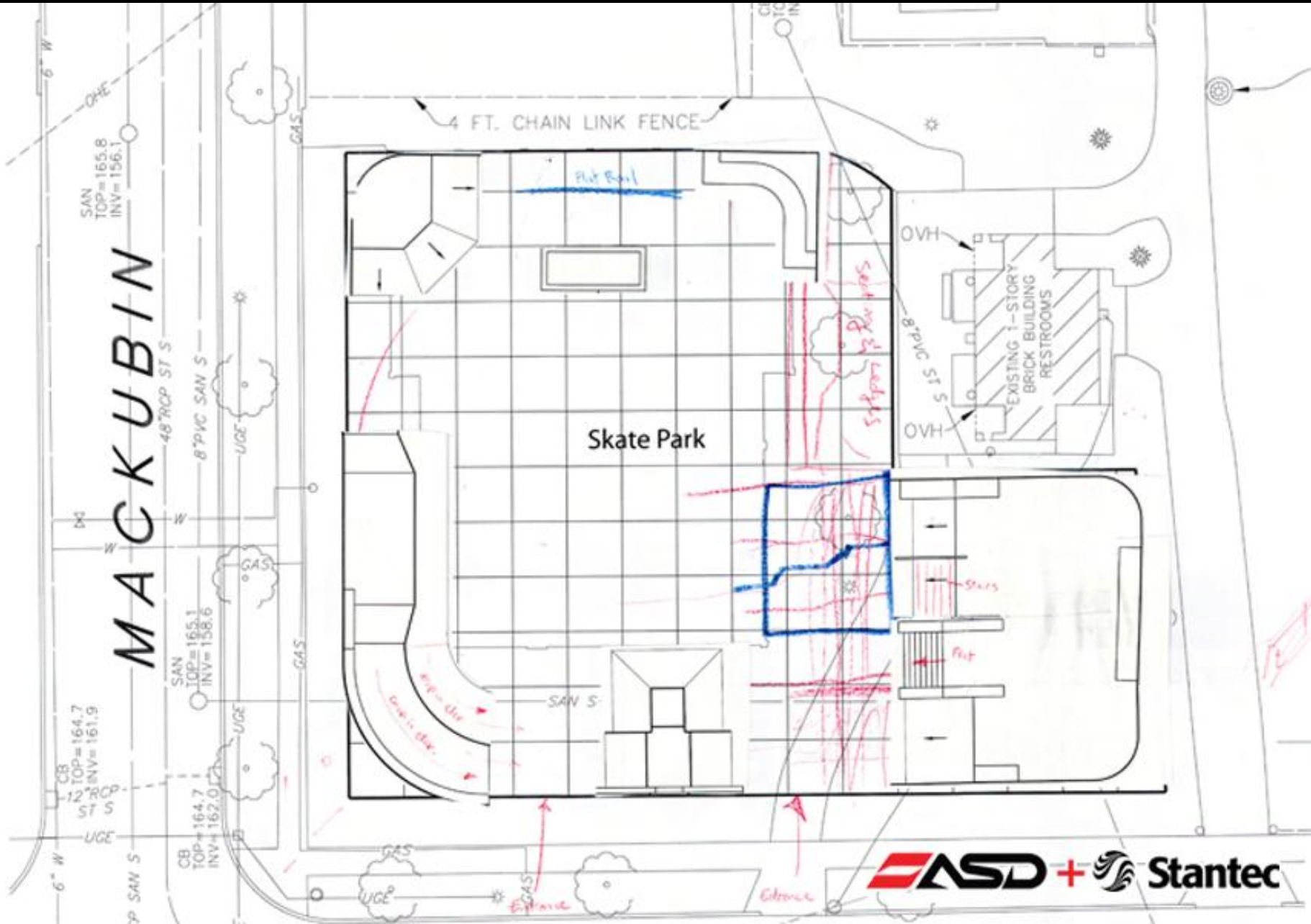




# GROUP #1

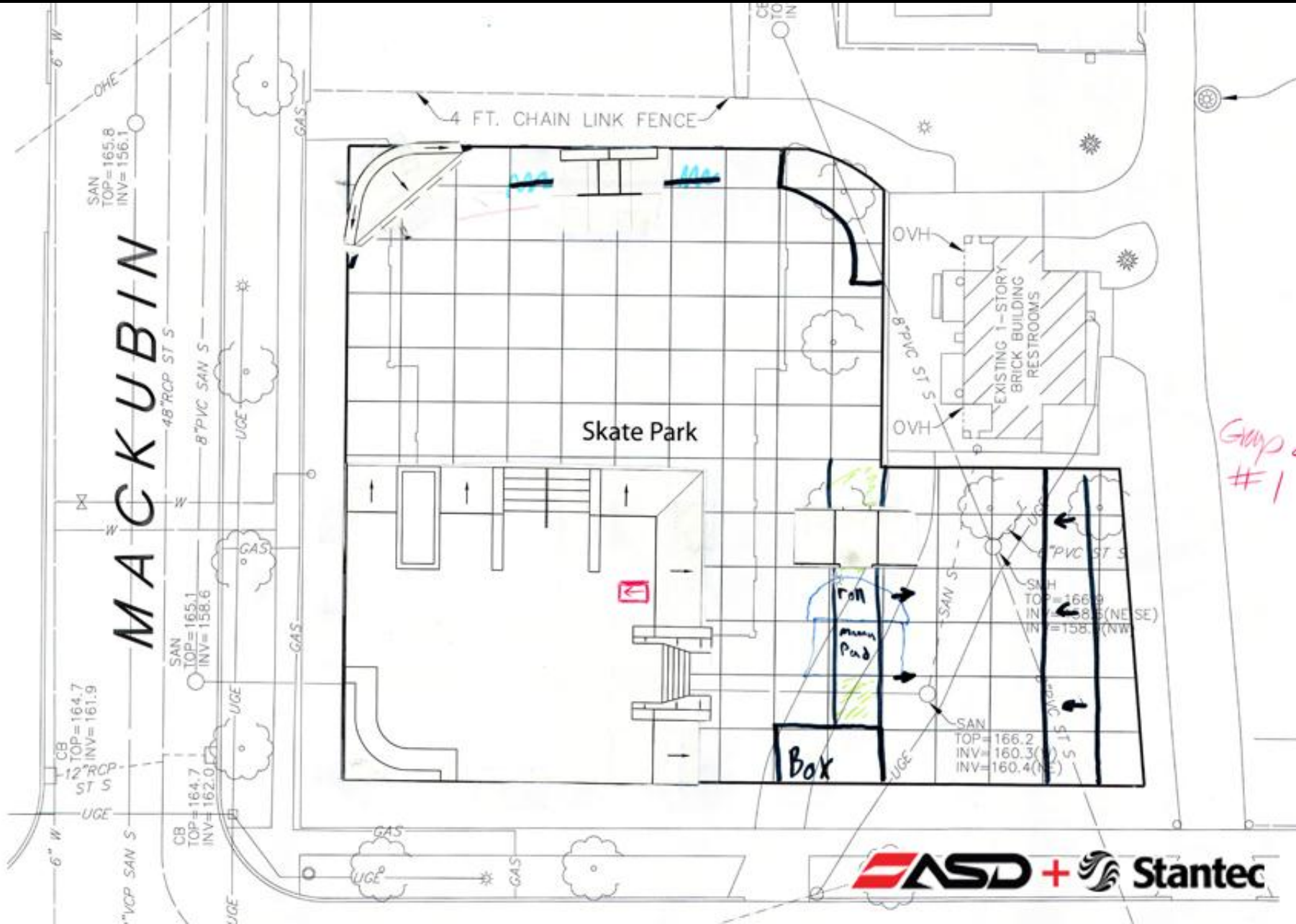


# GROUP #2





# GROUP #2



Group #1

---

# FRONT SKATE PARK CONCEPT #1





# MACKUBIN

# STINSON STREET



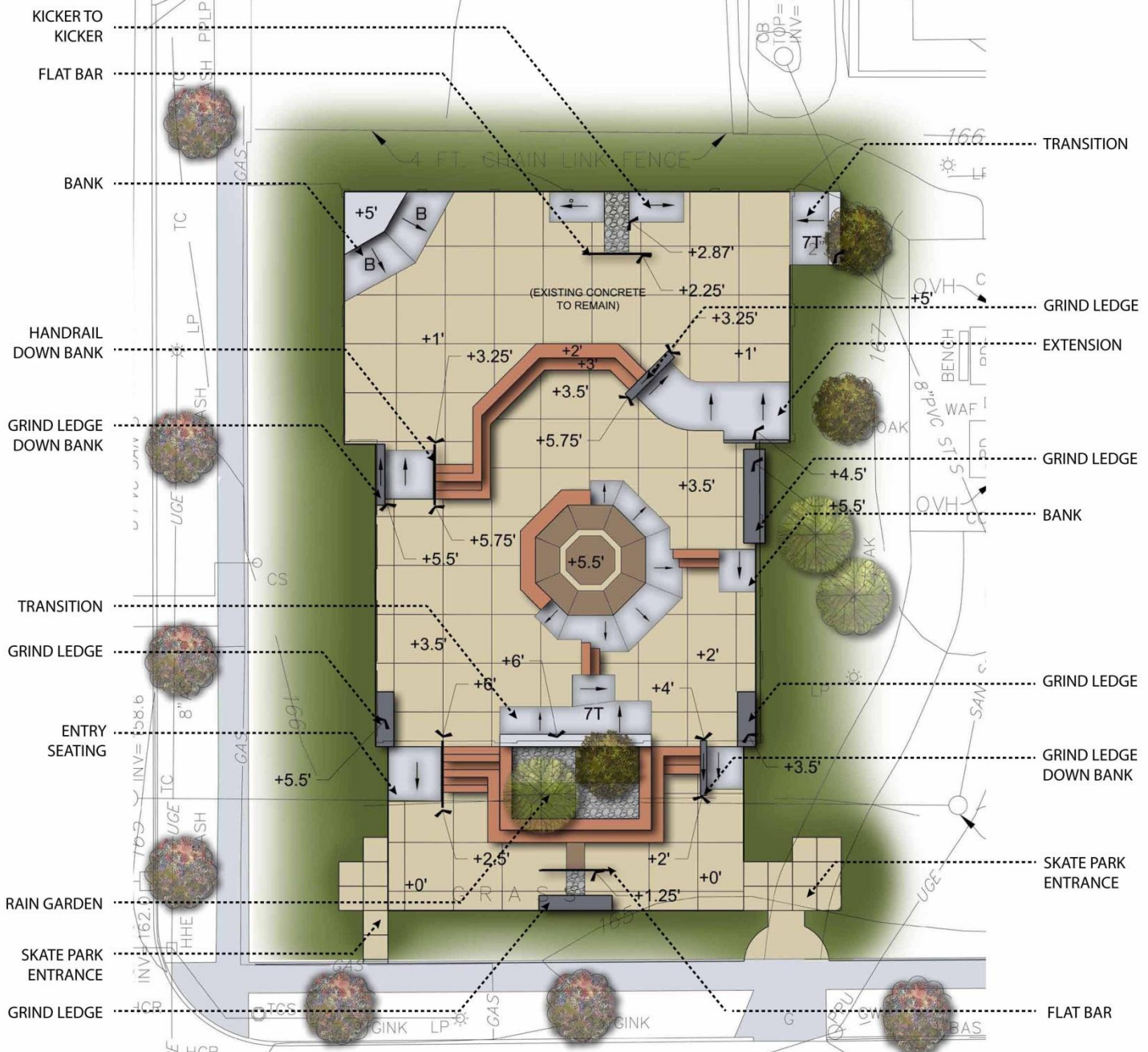


---

# FRONT SKATE PARK EXAMPLE CONCEPT #2





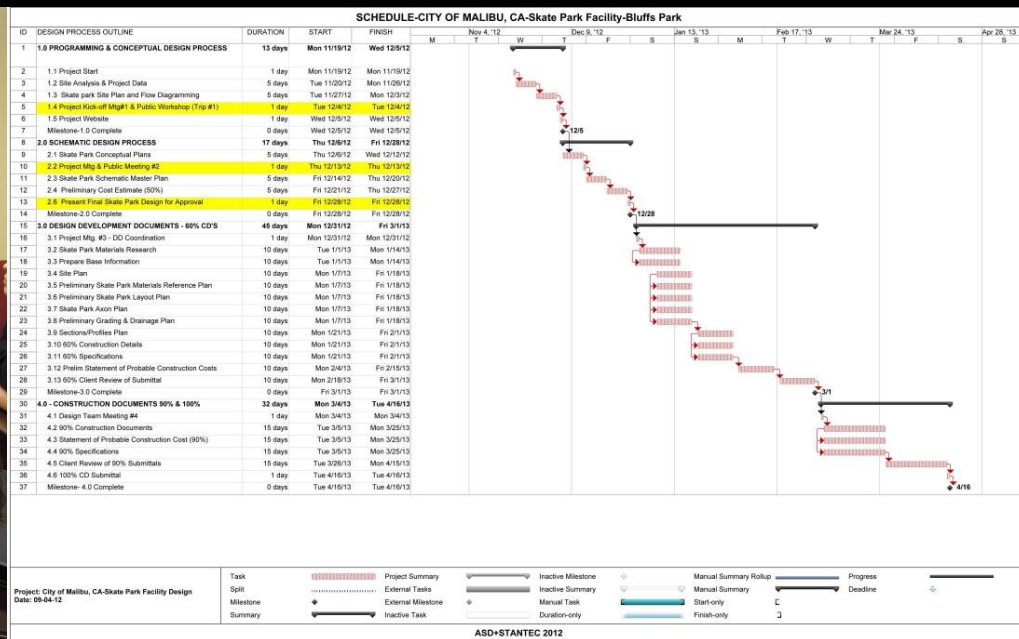


COMMUNITY ENGAGEMENT PROCESS



## TASK 1-PROJECT INITIATION

- Meet with City staff on project intent and planning process
- Review and evaluate all options for types of skate park features
- Define Services
- Schedule Consensus



## TASK 2-CONCEPTUAL DESIGN

**SKATE PLAZA  
USER MEETING #2**

**THURSDAY, AUG 26 @ 6 PM**  
**POPLAR BLUFF PUBLIC LIBRARY**  
**318 N. MAIN ST. POPLAR BLUFF, MO 63901**

**THIS IS  
YOUR  
CHANCE  
TO BE  
HEARD**

Meeting #2 to discuss the proposed skatepark design for the Poplar Bluff Skate Plaza. We will be reviewing input from the first meeting held August 10th and present updated concepts.



COMMUNITY WORKSHOP SIGNAL SHEET

Name	Address/City/Zip	Phone

ASD

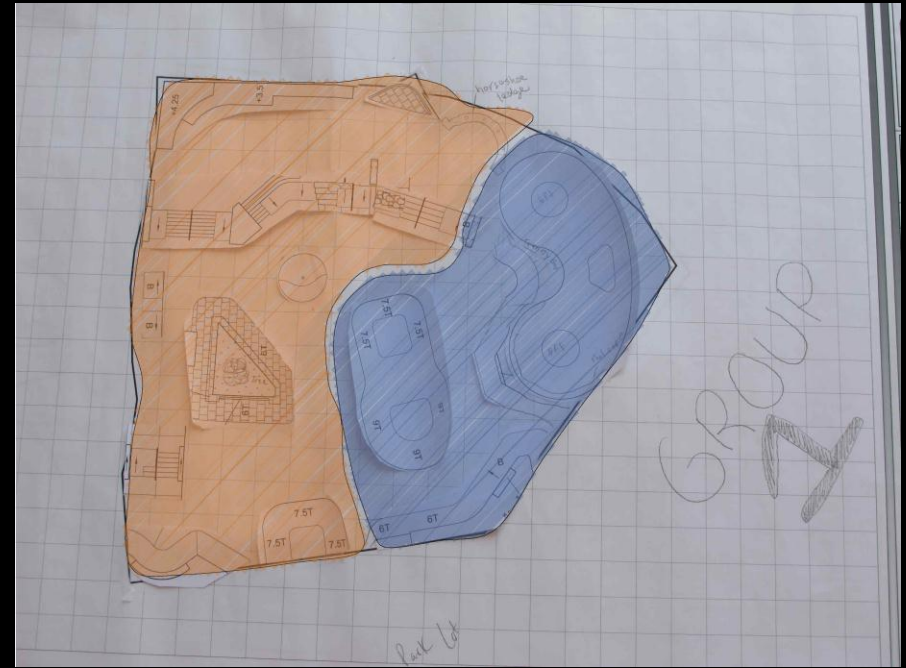
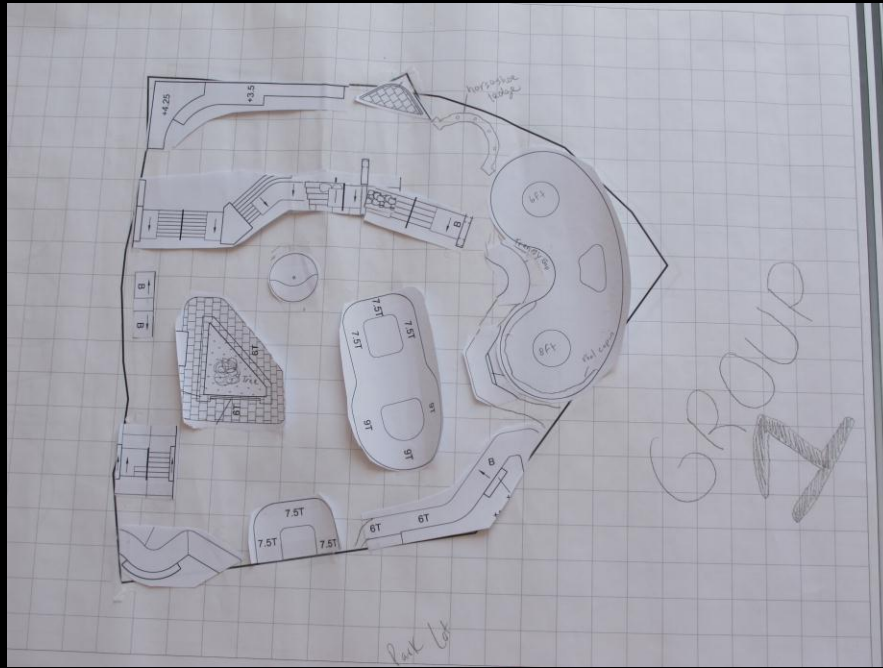
USER QUESTIONNAIRE

- Where are you presently skating?
- Have you skated a public skate park/ skate plaza?
- What features DID interest you?
- What features DID NOT interest you?
- What is your definition of a public skate park/ skate plaza?
- How long have you been skating (estimate)?
- What do you consider to be your skill level?  
 Beginner  
 Intermediate  
 Advanced
- What is your opinion regarding a multi-use facility (inline, bike and skateboarding)?
- Indicate the hours you skate the most:  
 How many times per week  
 What time of day and how long





## TASK 2-CONCEPTUAL DESIGN



Projects

## Jackson Tyler Norris Memorial Skate Park-Buda, TX

[Comments](#)



Example Concept A



Example Concept B



Example Concept C



# PUBLIC FACILITATION-CONSENSUS BUILDING

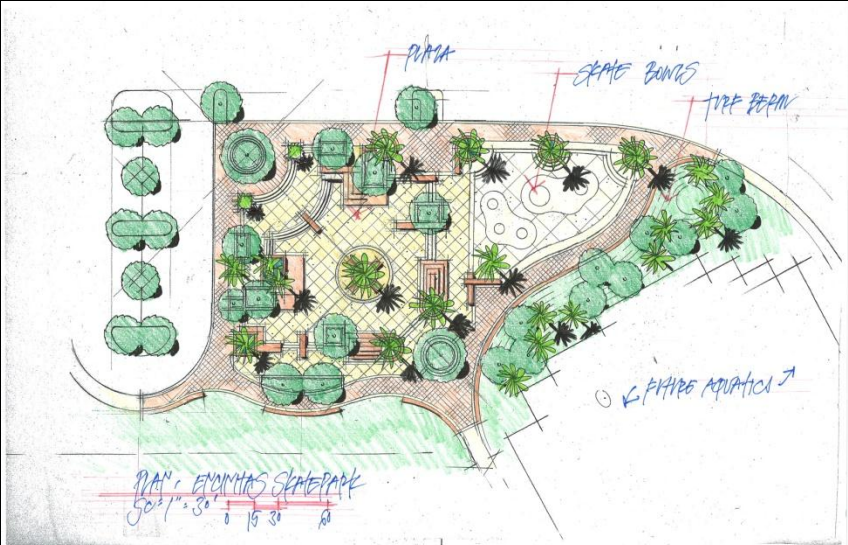


TASK 2-CONCEPTUAL DESIGN





TASK 2-CONCEPTUAL DESIGN





TASK 2-CONCEPTUAL DESIGN





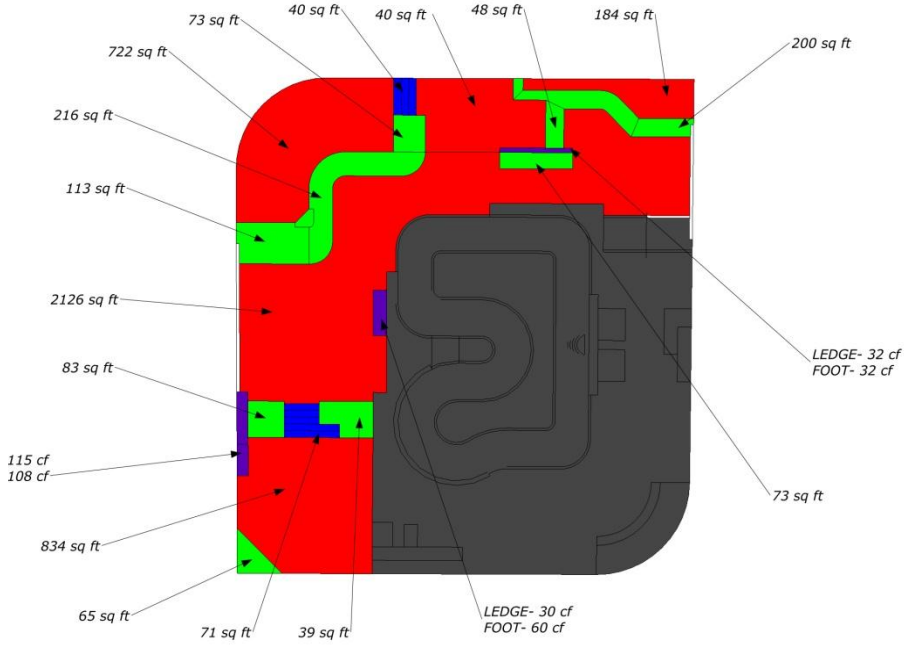
## TASK 3-FINAL CONCEPTUAL DESIGN

*“The bottom line is that they delivered their work professionally, on time and on budget. The skateboarders love the facility and it is packed every day”.*

Chris Carterette, AICP  
 Senior Planner  
 City of Fort Bragg  
 Community Development Department

**Fort Bragg Skate Park**  
 For Bragg, CA  
 Date: 3.15.10

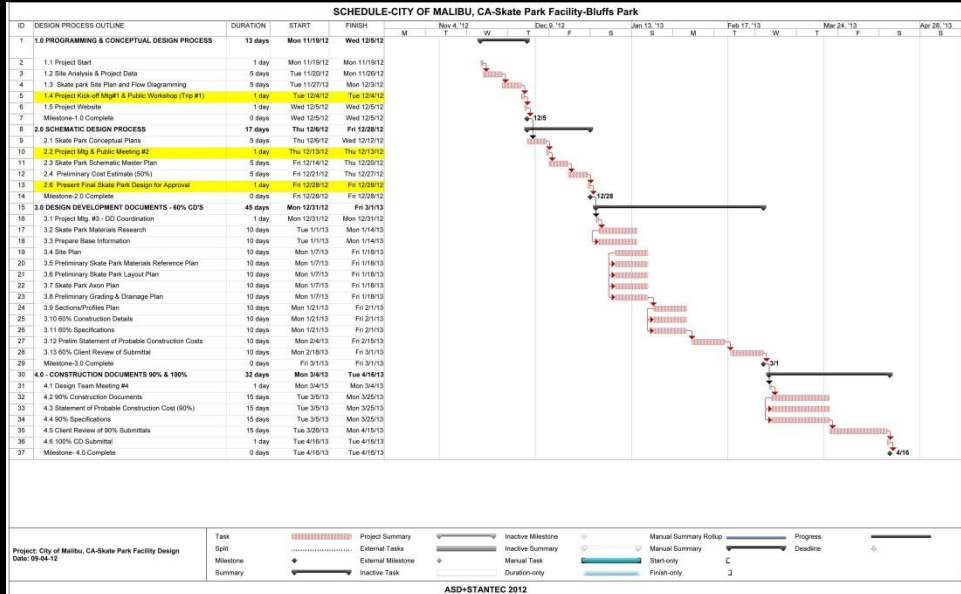
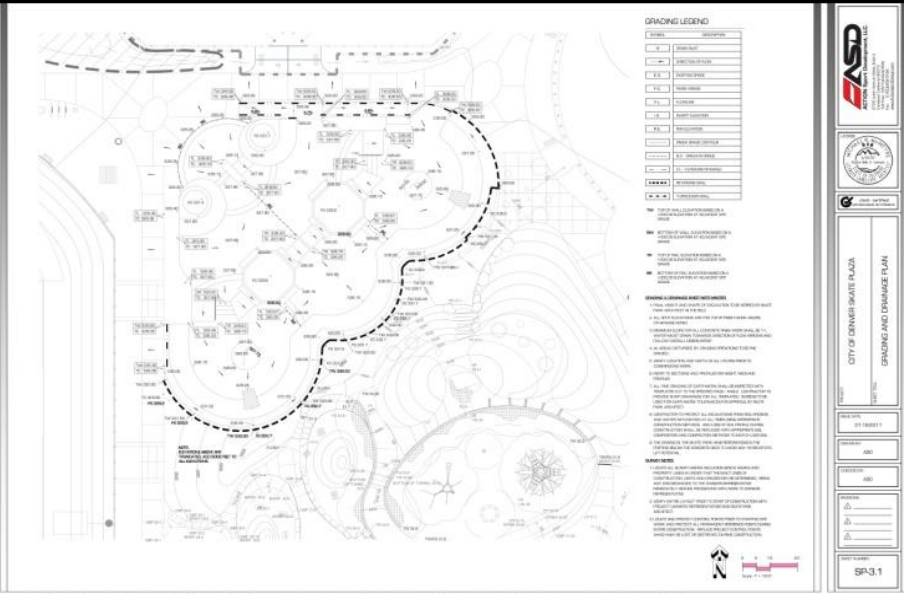
ITEM NO.	DESCRIPTION	APPROX. QUANTITY AND UNIT	UNIT PRICE	TOTAL AMOUNT
<b>PHASE 1</b>				
<b>00000 - General</b>				
1	10% Mobilization	1	\$ 15,156.90	\$ 15,156.90
<b>02220 - Demolition</b>				
5	Clearing & Grubbing	5,359 sf	\$ 0.50	\$ 2,679.50
<b>02300 - Earthwork</b>				
17	Rough Grading	5,359 sf	\$ 3.00	\$ 16,077.00
<b>03300 - Cast-In-Place Concrete</b>				
34	4" [10.16cm] Flat Top Deck - Rebar Reinforced Concrete Over Aggregate	3,906 sf	\$ 10.00	\$ 39,060.00
37	Ledges / Boxes / Manual Pads / Jersey Barriers	177 cf	\$ 50.00	\$ 8,850.00
38	Ledges / Boxes / Manual Pads / Jersey Barriers- FOOTINGS	200 cf	\$ 10.00	\$ 2,000.00
41	Stairs - Rebar Reinforced Concrete Over Aggregate Base	111 sf	\$ 50.00	\$ 5,550.00
42	Turndown Wall (+/- 16" High)	50 cf	\$ 90.00	\$ 4,477.50
43	Retaining Wall (+/- 30" High)	144 cf	\$ 100.00	\$ 14,400.00
44	Retaining Wall (+/- 30" High)- FOOTINGS	112 cf	\$ 10.00	\$ 1,120.00
<b>03300 - Shotcrete</b>				
46	6" [15.24cm] Banks	910 sf	\$ 21.00	\$ 19,110.00
<b>05500 - Metal Fabrications</b>				
53	3" Round Steel Pipe	21 lf	\$ 50.00	\$ 1,050.00
54	2" x 2" Square Steel Pipe	60 lf	\$ 50.00	\$ 3,000.00
56	2" X 6" Square Steel Pipe	6 lf	\$ 50.00	\$ 300.00
57	3" X 3" Square Steel Pipe	20 lf	\$ 50.00	\$ 1,000.00
<b>05700 - Ornamental Metals</b>				
61	Decorative Fencing	385 lf	\$ 85.00	\$ 32,725.00
63	Roll Gate	2 ea	\$ 85.00	\$ 170.00
<b>Contingency</b>				
66	Construction Contingency	1	\$ 7,578.45	\$ 7,578.45
67	General Contractor Mark-Up on Skate Park Subcontractor	1	\$ 7,578.45	\$ 7,578.45
<b>PHASE 1 COST ESTIMATE</b>				<b>\$ 181,882.80</b>



SKATE PARK AREA TAKE OFF

# TASK 3-FINAL CONCEPTUAL DESIGN

- Integration with rest of park.
- Prepare dimensioned site plans, details.
- Cost estimate
- Construction Schedule







# CONSTRUCTION ADMINISTRATION





**ST. CLOUD**  
**SKATE PLAZA**  
MINNESOTA

**GRAND OPENING**  
Saturday, November 13

with special guests:  
**kellen james**  
**marius syvanen**  
**tyler surrey**

thanks:  
**kanten russell**  
PRINCIPAL DESIGNER, PROJECT MANAGER • TEARDROP THE PLACE

10AM • SPEECHES & RIBBON CUTTING  
11-12PM • DEMO • BBQ  
5PM • RAFFLE & SHOP VIDEO PREMIERE  
FRIDAY, NOV. 12TH • 6PM • MEET THE PROS & CREATORS • the youth shelter supply

**HISTORY!**

sponsored by:

**HABITAT FOR HUMANITY**  
225 33RD AVE SOUTH  
ST. CLOUD, MINNESOTA

**SKATEBOARDING**  
the Youth Shelter Supply

**ASD**  
ARCHITECTURAL SERVICES DESIGN



# *PROJECT SCHEDULE*

---

- November 14– Project kickoff public input meeting
- December 11– Public meeting to review proposed design concepts
- TBD (January) – Public to review/approve final proposed design



---

DISCUSSION: NEXT STEPS

DESIGN WORKSHOP